



Solutions to Mechanical Seal Problems

THROUGH INNOVATIVE ENGINEERING AND EXPERT TECHNICAL SERVICE

DUAL SEAL RESERVOIRS AND GAS CONTROL PANEL



3 GALLON W/O COOLING COILS

Available in Carbon Steel Schedule 40; 304 SS Schedule 10; and optional 316 SS Schedule 40 with flanged bottom. Equipped with a welded pad sight glass.



3 GALLON W/ COOLING COILS

Available in Carbon Steel Schedule 40; 304 SS Schedule 10; and optional 316 SS Schedule 40 with flanged bottom. Equipped with a welded pad sight glass

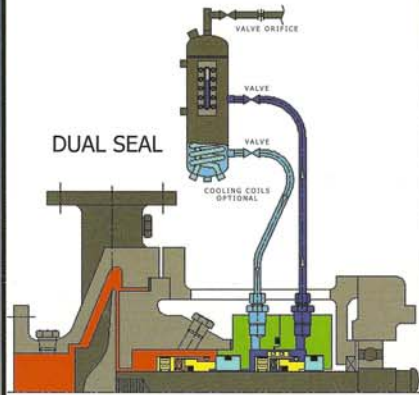


FCA GAS BARRIER CONTROL PANEL

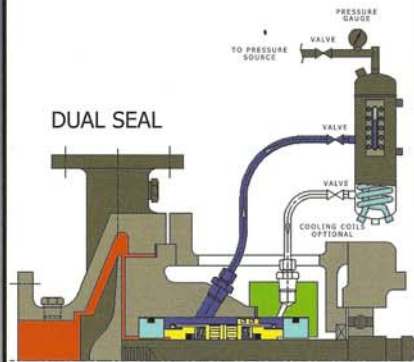
A compact sturdy panel with two connections, inlet from the main gas source, an outlet to the 7000G gas seal gland barrier connection. The panel is made of sturdy stainless steel, includes a pressure regulator with a built in filter, flow meter, and easy to read pressure gauge.

API PIPING PLANS AND SCHEMATICS

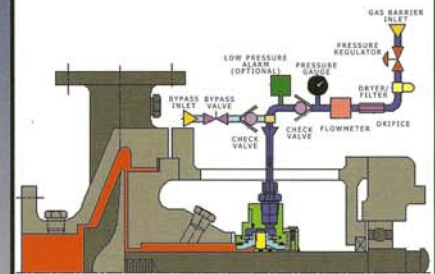
API PLAN 52/ ANSI PLAN 7352



API PLAN 53/ ANSI PLAN 7353



API PLAN 74/ ANSI PLAN 7374



In this plan during normal operation, circulation is maintained by an internal pumping ring. The reservoir is usually continuously vented to a vapor recovery system. Pressure is maintained at a pressure less than the pressure in the seal chamber.

In this plan the reservoir pressure is greater than the process being sealed. Circulation is by an internal pumping ring. Product temperature, shaft speed, and pressure will dictate the need for cooling of the barrier fluid.

In this plan the inert gas pressure is maintained at a higher pressure than the process pressure being sealed. The inert gas pressure should remain on at all times, when the pump is running as well as when it is shut down.

Stock Number	Material Description	Size & Type
00-008-Q-03*	Carbon Steel Schedule 40	3 Gallon W/O Cooling Coils
00-008-Q-04*	Carbon Steel Schedule 40	3 Gallon With Cooling Coils
00-008-B-01	304 SS Schedule 10	3 Gallon W/O Cooling Coils
00-008-B-02*	304 SS Schedule 10	3 Gallon With Cooling Coils
00-008-1-85	316 SS Schedule 40	3 Gallon With Cooling Coils Removable Flange Bottom
00-008-X-93*	SS Flow Control Unit	
*Stock types and sizes		

WARRANTY: PPC seals and seal parts are guaranteed to be free from defects in material and workmanship and are guaranteed to render satisfactory service when used for the purpose for which they are designed



MECHANICAL SEALS

P.O. BOX 52915 - 2769 MISSION DRIVE
BATON ROUGE, LA 70805

225-356-4333 - 1-800-731-7325 - FAX 225-355-2126