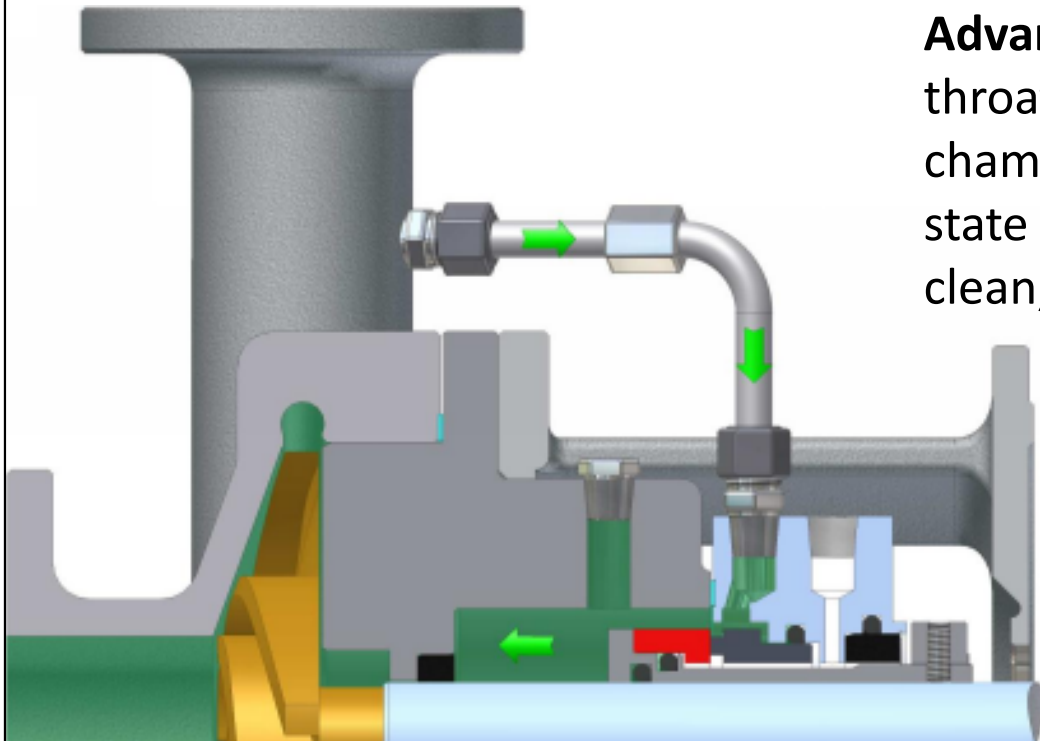
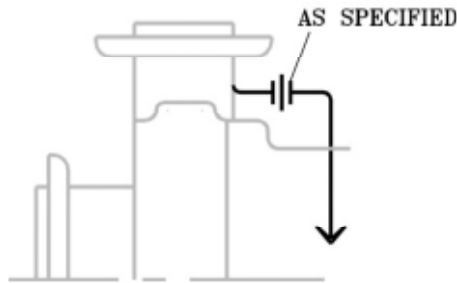


Plan 11



Description: Plan 11 is recirculation from pump discharge through an 1/8" minimum flow control orifice, when necessary, to the seal and flows back into the pump.

Objective: Dissipate seal generated heat, vent the seal chamber at start-up and increase the vapor margin in the seal chamber.

Advantages: When used with a close fitting throat bushing, will raise the pressure in the seal chamber to maintain the process in the liquid state when cooling is not practical. Best for a clean, non-polymerizing process.